

PILL MANAGERS

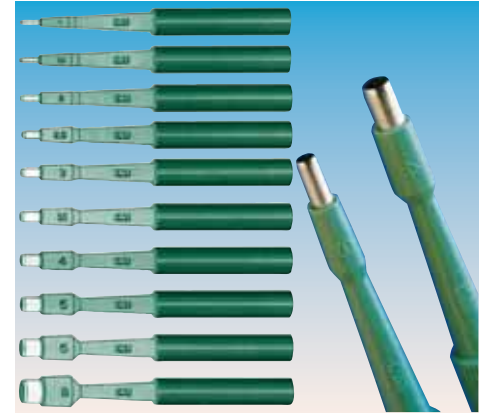


PILL PULVERIZERS
See page 67.

VET PRODUCTS

- **CLOGS**
See page 23
- **TOURNIQUETS**
See page 42
- **SCALPELS and BLADES**
See page 44
- **THERMOMETERS**
See page 65
- **VET BAGS**
See page 47-50
- **TROLLEYS**
See page 91-102
- **BANDAGES, GAUZES, PLASTERS**
See page 288-294
- **BARRYCIDAL 30 PLUS DISINFECTANT**
See page 299

BIOPSY PUNCHES



BIOPSY PUNCHES
DERMAL CURETTES
See page 43.

SURGICAL CLIPPER



SURGICAL CLIPPER
See page 43.

SUTURES



SUTURES AND SKIN STAPLER DEVICE
See page 45.

SUCTION UNITS



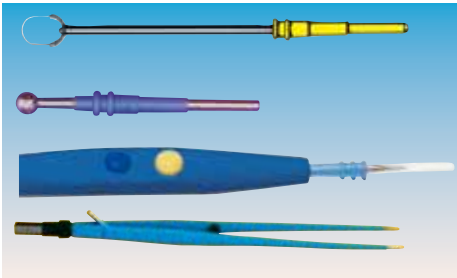
SUCTION UNITS
See page 133-136.

ELECTROSURGERY



ELECTROSURGICAL UNITS
See page 153-156.

ELECTROSURGERY



ELECTROSURGERY ACCESSORIES
See page 159-163.

HEADLIGHTS



HEADLIGHTS
See page 165-168.

EXAMINATION LIGHTS



HALOGEN AND LED EXAMINATION LIGHTS
See page 171-176.

3M LITTMANN® STETHO



3M LITTMANN® CLASSIC II
3M LITTMANN® CARDIOLOGY
See page 201-202.

SURGEON BRUSHES



SCRUB KIT - sterile - box of 32
CHLOREXIDINA SCRUB KIT - sterile
PVP-iodio SCRUB KIT - sterile
See page 297.

BM3 AND BM5 PORTABLE MULTIPARAMETER VET MONITORS



33779

- 33719 BM3 VET MONITOR - 7" TFT display
 - 33779 BM5 VET MONITOR - 10.4" TFT display
- Versatile, portable, lightweight, BM monitors are designed to be used in veterinary environment. Compact design and handle make it easy to move. Colour monitor displays all vital signs in different colours for easy recognition. A built in printer offers hard copy documentation of all measured values. Alarms and settings are easily adjustable. See all specifications and accessories at page 245-246.

- 33741 EXACON RECTAL TEMPERATURE SENSOR - 2.75 m cable

ECG+SpO₂+NIBP
+RESP+TEMPERATURE
+2IBP (only 33779)



3-lead ECG clip



SpO₂ sensor

HANDHELD VET PULSE OXIMETER



- 34343 OXY 100 VET PULSEOXIMETER
- OXY 100 Handheld PulseOximeter can measure oxygen saturation (SpO₂) and pulse Rate (PR) by placing the sensor on the certain part of the animal, such as tongue, ear, leg or tail. It also provides plethysmogram, bar-graph and Perfusion Index display.
- Lightweight, small and easy to handle
 - Data storage with trend review
 - Two options for measurement on: thin tissue: such as tongue, ear, thick tissue: such as leg, tail.
 - Up to 384 hours of data memory (with 1/2/4/8 sec. recording interval)
 - Audible & Visual alert for over-limits (limits are adjustable).
- Oximeter is supplied with universal "Y" type SpO₂ probe. See technical specifications page 251.
- 34346 UNIVERSAL "Y" type SpO₂ probe - spare includes 3 types of probe adapters (big clip, small clip, rubber wrapper).



34346

OXY 100 is equipped with a special probe for animals monitoring. The universal "Y" type SpO₂ probe can be used in combination with the provided three types of adapters: big clip, small clip and rubber wrapper. Each of these adapters allows a different measuring respectively on tongue, ear, leg or tail.

PREVITNT COHESIVE NON WOVEN ELASTIC BANDAGES

PREVITNT NON WOVEN ELASTIC BANDAGES

For fixing dressings.
Ideal for supporting joints, treating light fractures.
This bandage does not require clips because it remains well-attached to itself.
Particularly suitable for use on joints, for sports and veterinary use.
Composition: 85% polypropylene - 15% spandex and latex.
Extensibility: approx 100%.

COHESIVE COLOUR NON WOVEN BANDAGE				
Size	Blue	Red	5 Colours*	Minimum order
4.5 m x 7.5 cm	34734	34735	34736	box of 10
4.5 m x 10 cm	34738	34739	34740	box of 10

*Mix of 2 bandages x 5 colours (blue, red, green, yellow, skin)



CHISON SONOTOUCH - THE FUTURE FOR VETERINARY ULTRASOUND

- 33912 SONOTOUCH VET B/W ULTRASOUND
- 33913 SONOTOUCH VET COLOUR ULTRASOUND

10" LED touch screen - button free

- sharp and bright images visible outdoor under sunlight
- waterproof front panel

Easy measurement

- VET software
- measurement accuracy to under 1 mm
- take measurements with your fingers, no trackball, no stylus

Powerful

- built-in lithium battery lasts up to 2.5 hours
- starts in 30 seconds, shuts down in 2 seconds.

Many applications

- over 25 VET preset applications
- select species and presets by visual icon

Quality images

- refine the image with easy, touch-driven TGC, focus and depth



Multifunctional stand

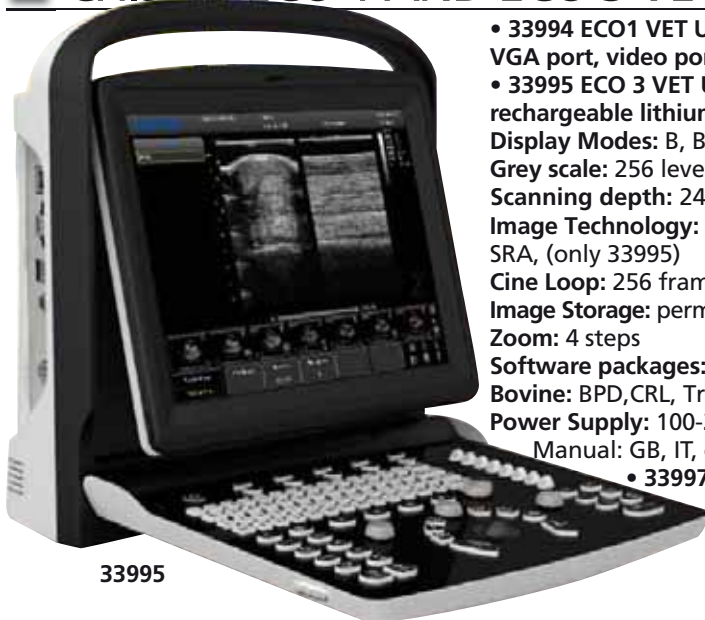
- desk stand with adjustable angle
- stand convertible into an integrated carrying handle

- Small animals
- Large animals



GIMA code	PROBES Scanning Method	FREQUENCY (MHz)		Main application						
		Main freq.	Probe band width	ABDOMINAL	OB/GYN	UROLOGY	CARDIOLOGY	INTESTINE	EQUINE	MSK, TENDON
33922	CONVEX	3.5	2.5 - 5.0	○	○	○				
33923	LINEAR	7.5	5.0 - 10.0	●			●	●	●	
33927	MICRO-CONVEX	6.0	4.0 - 8.0	●	●		●			

CHISON ECO 1 AND ECO 3 VET ULTRASOUNDS



33995

- 33994 ECO1 VET ULTRASOUND with 1 probe connector, without probe, 3 USB ports, VGA port, video port.

- 33995 ECO 3 VET ULTRASOUND with 2 probe connectors, without probe, built in rechargeable lithium ion battery (2 hours), 3 USB ports, VGA port, video port.

Display Modes: B, B/B, 4B, M, B/M

Grey scale: 256 levels

Scanning depth: 240 mm max (depending on probe type) only 33994

Image Technology: Compound Imaging, Trapezoid imaging, Chroma, i-image, THI, SRA, (only 33995)

Cine Loop: 256 frames

Image Storage: permanent storage on built-in memory, and USB disk (33994), 8G (33995)

Zoom: 4 steps

Software packages: Canine: GS, CRL, HD, BD. Feline: HD, BD. Equine: GS,

Bovine: BPD, CRL, Trunk Diameter. Ovine: BPD, CRL, Trunk Diameter.

Power Supply: 100-240V, 50Hz~ 60Hz

Manual: GB, IT, on request FR.

- 33997 MICROCONVEX 6.0 MHz (4.0-8.0 MHz) PROBE

- 33998 CONVEX 3.5 MHz (2.5-5.0 MHz) PROBE

- 33999 LINEAR 5.3-10.0 MHz PROBE

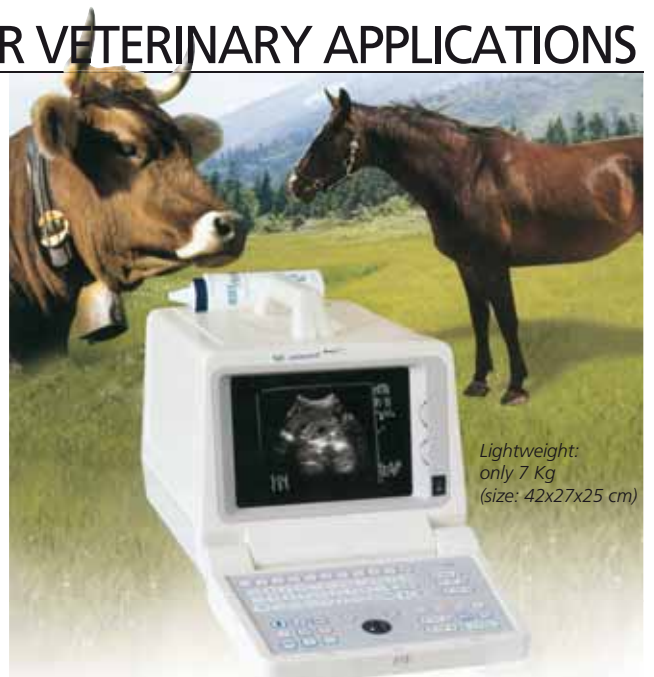
PORTABLE ULTRASOUND UNIT FOR VETERINARY APPLICATIONS

- 33936 VETERINARY ECOGRAPH 10" SVGA monitor with two probe connectors, cine memory card, without probes.

- image reversing: left/right, up/down, positive/negative
- zooming: X1.0, X1.2, X1.5, X2.0 with scroll-up depth control
- measurements: distance, circumference, area, volume (bladder volume, thyroid volume), 15 body marks.
- reproduction software: Bovine: BPD, CRL, Trunk diameter, Equine: GA, Canine: GS, CRL, HD, BD, Feline: HD, BD
- Ovine: BPD, CRL, Trunk, Diameter
- power supply: 230V/50 Hz (110V/60 Hz on request)

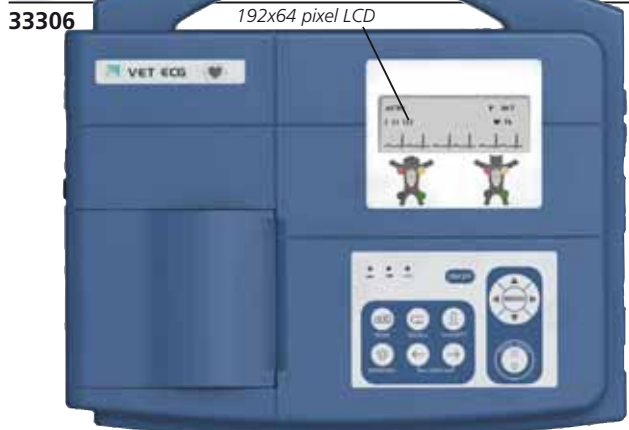
- 33967 SONY PRINTER UP-897 MD

GIMA code	PROBES		Frequency (MHz)		Applications		
	Outlook	Scanning Method	Main freq.	4-Step Multi-frequency		Ob/Gyn	Abdominal Cardiology
33932		Convex	3.5	2.5/3.5/4.0/5.0	Ovine		●
33938		Linear	5	3.5/5.0/6.0/7.0	Canine		●
					Equine		●
33939		Micro-convex	5	3.5/5.0/6.0/7.0	Bovine		●
					Ovine		●
					Feline		●
					Canine		●



Lightweight: only 7 Kg (size: 42x27x25 cm)

VETERINARY ECG - 1 AND 3 CHANNEL



33306

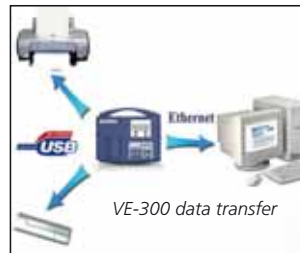
192x64 pixel LCD

- 33305 VE-100 - 1 channel ECG
- 33306 VE-300 - 3 channel ECG
- 33336 ECG-Viewer software (GB, IT, FR, ES, RU, PT, PL, TU) for 33306
- complete digital design
- LCD display waveforms, parameter configuration
- high resolution thermal printer
- built in rechargeable Li-ION battery for 3 hours use (AC/DC supply)

- complete digital filter, avoid baseline drift, AC, EMG interfere
- baseline automatically adjustable, optimizes printing position
- selectable auto/manual operation

Features of VE-300 only

- 7 leads simultaneous acquisition
- automatic ECG parameter measurement and analysis
- support USB ink-jet printer for 7 leads printing
- 120 patient data storage and transfer by USB flash disk, Ethernet or series port
- review and management of ECG data on Window PC with software (optional 33336)



Internal software: GB, IT (33305/6), DE, FR, ES (33305 only)

- 32963 THERMAL PAPER ROLL 50mm x 25m for 33305
- 32964 THERMAL PAPER ROLL 80mm x 25m for 33306
- 33318 RE-CHARGEABLE LITHIUM BATTERY 2200 mAh
- 33319 5-LEAD VETERINARY ECG CABLE - spare

TECHNICAL SPECIFICATIONS		
	33305	33306
Lead	single	standard 7 lead
Acquisition mode	single	7 leads simultaneously
Frequency response	0.05 Hz ~ 150 Hz	
Sensitivity	2.5, 5, 10, 20 (mm/mV)	
Input impedance	>10 MΩ	>50 MΩ
Filter	EMG Filter 35 Hz (-3dB) AC/DFT Filter 50/60Hz (-20dB)	EMG Filter 25/35/45Hz / OFF DFT Filter 0.05/0.15/0.25/0.5 Hz Low pass Filter 150/100/75 Hz AC Filter 50/60 Hz
Recording mode	Auto/Manual	Auto/Manual/Rhythm/OFF/USBPRT
Safety standard		IEC I/CF
Power supply	AC: 100-115-220-240 V, 50/60 Hz Built-in rechargeable Li-ion battery: voltage=14.4 V More than 3 hrs, continuously operation under battery supply	
Thermal paper	5 mm x30 m	80 mm x20 m
Paper speed	25/50 mm/s (± 3%)	5/6.25/10/12.5/25/50 mm/s (± 3%)
Size	300x260x75 mm	
Weight	2.3 kg (with battery)	2.5 kg (with battery)
Display	192x64 pixel LCD	192x64 pixel LCD
External input/output	Input: ≥100 kΩ; Sensitivity: 10 mm/V ± 5% output: ≤100 kΩ; Sensitivity: 1 mm/V ± 5%	
Communication interface	RS232	Ethernet, RS232, USB

STANDARD ACCESSORIES

- 5-lead veterinary ECG cable (Ø 4mm, banana connector, IEC)
- Veterinary clip electrodes (set of 5, match Ø 3-4 mm ECG cable)
- 1 Paper roll
- Rechargeable lithium battery (2,200 mAh)
- Manual: GB, IT - on request FR, ES, DE

VETERINARY DOPPLER

• 80600 GIMA VET DOPPLER - FIXED 8 MHz probe

New doppler for detecting blood flow in small peripheral vessels with its unique 8 MHz probe ideal for veterinary practitioners for routine blood pressure measurement on pets. Flow signals are easily located using the lightweight narrow beam transducer while internal signal processing minimizes noise artefacts.

TECHNICAL SPECIFICATIONS		
Ultrasound		Power supply
Frequency: 8 MHz continuous wave		Battery 9V Alkaline (not included)
Transducer: 2 crystal narrow beam		Expected battery life: >9 hours
Output power: <15 mW/cm² SATA		Output
Audio Response: 300 Hz - 4 kHz		Headset: Audio output for optional headset (not included)
Unit Controls		
Keys: 1 key (for unit on/off)		Material: ABS / Noryl
Controls: rotary volume		Size: 150x75 mm
Indicators: yellow battery low LED		Weight: 299 g (with transducer)
		Classification: Class I Type B - IEC 60601-1



VET STETHOSCOPE

• 32545 REGALITE VET - black

Top quality single head stethoscope. Patented multi-frequency "ring-raised™" diaphragm system. Chromed plated chestpiece with "SUPERFLEX" inner spring binaural and 1 piece moulded PVC, latex free, tubing 90 cm long. Supplied in deluxe box, with spare soft eartips and one spare diaphragm.

90 CM LONG Y TUBE



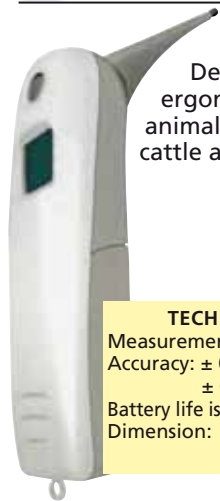
THERMOMETER

• 25588 VET RECTAL THERMOMETER

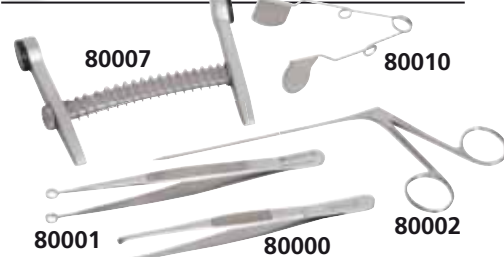
Designed to be ergonomically correct for animals. Setting for pets, pigs, cattle and other animals.

TECHNICAL SPECIFICATIONS

Measurement range: 32 ~ 43 °C
Accuracy: ± 0.1 °C (35 ~ 39 °C);
± 0.2 °C (<35 °C ~ >39 °C)
Battery life is approximately 5000 readouts
Dimension: 190x110x35 mm



INSTRUMENTS



- 80000 Durante forceps - 15 cm
- 80001 Terza palpebra forceps - 11 cm
- 80002 Long Hartmann - 14.5 cm
- 80005 Mouth opener - 7 cm
- 80006 Mouth opener - 11 cm
- 80007 Mouth opener - 15 cm
- 80010 Rodent mouth opener - 6 cm
- 80011 Rodent mouth opener - 8.5 cm

MD SCOPE VET VIDEO OTOSCOPE



MD SCOPE VET VIDEO OTOSCOPE

Instant View
A clear and sharp image can be acquired and displayed instantly on a built-in screen.
Just press a single button and wait for 3 seconds.

Real Time Interaction
The medical image can be captured and displayed simultaneously on TV monitor or downloaded to Mac/PC system.

Electronic medical record
A medical image is automatically generated to support most of the stand-alone health information system.
Probes and accessories at page 178.

TECHNICAL SPECIFICATIONS
2.4" colour LCD display
Video out port
Size/weight: 8x20 cm (2.5"x8") - 218 g
Battery lifespan: 4 hours



- **32164 VET MD SCOPE PACK 32175**
- 3 cameras**
- 3 camera probes 75/150/300 mm
- image dongle
- cable set
- 2 AA alkaline batteries
- **32175 CRADLE**



HEINE VET OTO AND OPHTHALMO



• **80500 BETA OTOSCOPE SET 2.5 V - G-112.10.118**
Set complete with slit illumination head, 1 set long closed metal specula (57x4,65x6,90x7 mm), 1 spare bulb, hard case.

• **80501 BETA 200 VET F.O. XHL OTO-OPHTHALMO SET 2.5 V - G-151.10.118**

Set complete with:
- Beta 200 ophthalm, Beta 200 vet otoscope
- 3 reusable Sanalons vet specula 61x Ø 4/6/9 mm
- 1 spare bulb for each instrument
- zipper case

• **31772 HEINE 077 OTOSCOPE BULB 2.5 V - spare**

• **31781 HEINE 069 OPHTHALMOSCOPE BULB 2.5 V - spare**

F.O. XHL XENON HALOGEN TECHNOLOGY



VET OTOSCOPES, OPHTHALMO AND DIAGNOSTIC SETS



31442
Open otoscope head is supplied with codes 31422, 31424, 31425



31424



31422



31425

• **31442 PARKER VETERINARY OTOSCOPE**
Includes: kit of 3 reusable plastic cannulas (31447)

• **31424 XENON HALOGEN DIAGNOSTIC SET**
Includes: xenon halogen open otoscope head+handle, xenon-halogen ophthalmoscope head, kit of 5 reusable plastic cannulas (31451), metal tongue depressor holder illuminator, nasal specula
Rechargeable battery handle 2.5V
All sets have 2.5V handle for use with 2xC batteries or rechargeable batteries (34479)

• **31422 XENON HALOGEN OTOSCOPE SET**
Includes: xenon-halogen open otoscope head+handle, kit of 5 reusable plastic cannulas (31451), kit of 3 reusable plastic cannulas (31447)

• **31425 XENON HALOGEN DIAGNOSTIC SET metal cannulas**
Includes: xenon-halogen open otoscope head+handle, xenon-halogen ophthalmoscope head, kit of 3 reusable metal cannulas + 2 metal specula (31453)



31447



31451



31453



Easy adjustable with finger clip

31454

GIMA code	VETERINARY SETS AND ACCESSORIES
31451	Kit of 5 reusable plastic cannulas (Ø 2.5, 3.5, 4.5, 5.5, 9 mm)
31447	Kit of 3 reusable plastic cannulas (Ø 4, 5, 7 mm)
31453	Kit of 3 reusable metal cannulas (Ø 4, 5, 6 mm) + 2 slotted metal specula (Ø 7.5, 9.4 mm)
31454	Nasal specula
31478	Xenon halogen otoscope bulb 2.5V
31479	Xenon halogen ophthalmoscope bulb 2.5V
31449	Standard otoscope bulb vacuum 2.5V for 31442
31542	Charging station
34479	Rechargeable NimH battery 2.5V / 3000 mAh

DIGITAL PET SCALES FOR LARGE AND SMALL ANIMALS

UP TO
300 KG

80211



Both scales are supplied with handle

- 80210 DIGITAL VET SCALE - metal platform
 - 80211 DIGITAL VET SCALE - stainless steel platform
- High reliable and professional full electronic scale. Robust platform with a separate LCD digital display. Overload and low battery function. Switchable kg/lb/st. Made in Europe.

• 80216 AC POWER

TECHNICAL SPECIFICATIONS

Capacity/Sensitivity: 300 kg / 100 g Minimum measurable: 2 kg
Platform size: 600x800 mm Power: 9 V alkaline battery



Manual in DE, GB, FR, ES, IT, GR, CZ.

Taring functions switchable to kg/lb

- 27266 SOEHNLE 8320 FOLDABLE SCALE
- 27271 CARRYING BAG

Foldable scale with magnetic lock for easy transport.

TECHNICAL SPECIFICATIONS

Capacity: 15 kg Sensitivity: 10 g
Dimensions: 375x315x105 mm (closed) - 740x315x53 mm (open)
Alkaline battery 2x1.5V AAA - not included
Weight: 1.9 kg Warranty: 2 years Made in Germany



- 27258 DIGITAL PET SCALE - medium
 - 27259 DIGITAL PET SCALE - large
- Precise full electronic multifunctional scale, designed for measuring your pet's weight available in two sizes. Quality product with very competitive price. Minimal measuring weight: 2 kg. Made in Europe.

Tray 530x290 mm

Lb/kg/st switchable by user

LCD display 25 mm

Overload and low battery indication

Tare and automatic hold functions



- 27261 DIGITAL SMALL PET SCALE

TECHNICAL SPECIFICATIONS

Capacity/Sensitivity: 20 kg / 10 g (27261) - 100 kg / 100 g (27258-27259)
Minimum measurable weight: 2 kg
Dimensions: 355x635 mm (27258) - 620x830 mm (27259)
Lithium battery: included Automatic switch-off

DIAGNOSTIC AND OPERATIVE VETERINARY TABLES



Size: 120x58xh 85
Weight: 24 kg
Load: 60 kg

- 80300 VETERINARY EXAMINATION TABLE
- Veterinary operating table with enamelled tubular steel frame, with AISI 304 15/10 stainless steel top with hole and a liquid tray holder underneath. Lateral hook to immobilize animals. Made in Italy.



Size: 118x56xh 85/102
Weight: 48 kg
Max load: 90 kg

- 80301 VETERINARY OPERATION TABLE
- Veterinary operating table with electric lift (82/102 cm), baked enamelled steel tubular frame and AISI 304 stainless steel top (120x56 cm) with hole and a liquid bucket holder underneath. Manual Trendelenburg 15° and Antitrendelenburg up to 15°. Lateral hook to immobilize animals. Made in Italy.

FASTENING CAGE

- 80310 TRAVELLING CAGE
- Fastening cage for small animals with reclining front door and sliding back door. Enamelled steel structure with tray made of AISI 304 stainless steel. Made in Italy. Size: 30x40xh 37 cm. Weight: 3 kg.



URINE STRIPS

- 24100 VETERINARY URINE STRIPS - 11 parameters - bottle of 100 strips
- For examination of glucose, ascorbic acid, ketones, protein, ph-value, blood, nitrite, leukocytes, specific gravity, bilirubin, urobilinogen. Each box includes a manual for interpretation of results in each of the following animal: horse, pig, cattle, sheep, goat, dog, cat, bunny and guinea pig. Made in Germany by Analyticon.

ASCORBIC ACID PROTECTED



Performs highest quality standard. Made in Germany